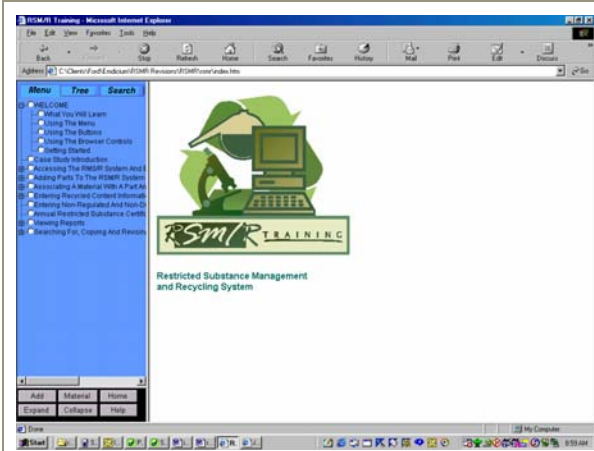


Ford Restricted Substance Management and Recycling (RSM/R) System

Developed For: The Emdicium Group, Inc.

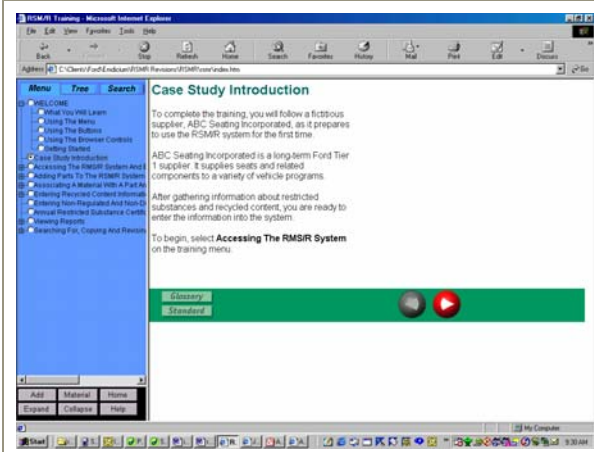
My Role: Instructional designer, writer, editor, Dreamweaver author

Description: Full system simulation web-based training with tutorials and feedback. Also includes a Reference Manual and Glossary. HTML for the original screens was copied from Ford's system to ensure a perfect match. Developed using Dreamweaver and Javascript.

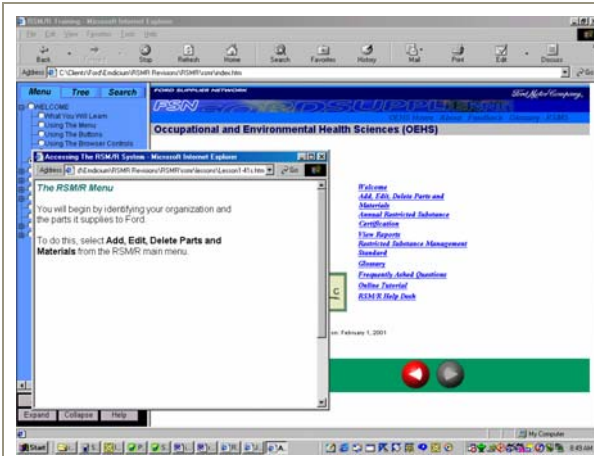


The e-learning is presented in **frames**. The upper left frame functions as the **Course Menu**, which expands and collapses to display levels of detail. The frame also displays the **Search Form** and **Component Tree**, which are part of the RSM/R system. **Tabs** at the top indicate which view is displayed.

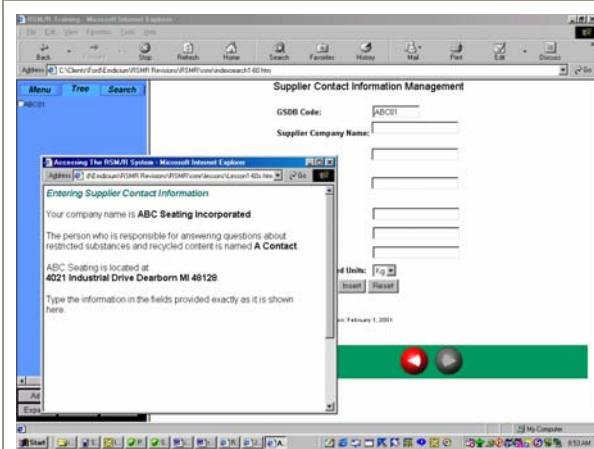
The **buttons in the lower left frame** help the learner navigate the Component Tree, just as they do in the RSM/R system.



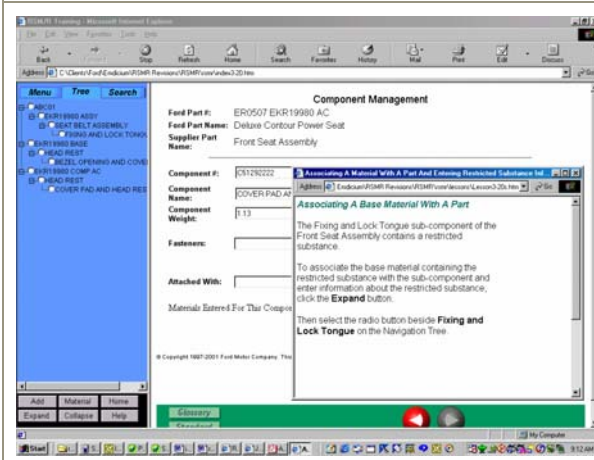
The e-learning walks the learner through a **case study** that involves entering and certifying the materials for a part.



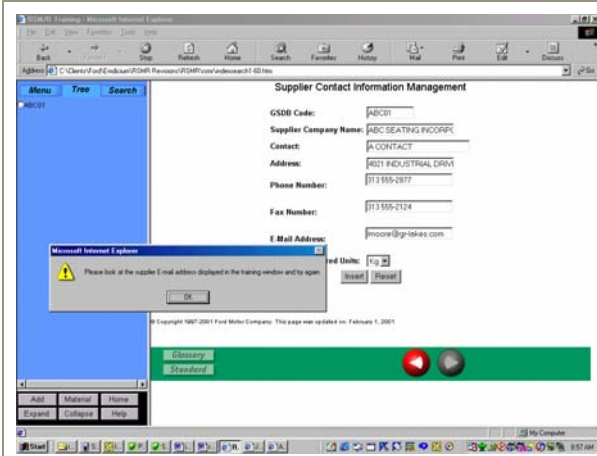
On a typical training screen, a **floating tutorial window** overlays the system simulation. As in the RSM/R system, **forms to be completed** are shown on the right and, where applicable, the **Component Tree** for the part being built is shown on the left. A **navigation bar** at the bottom lets the learner move forward and back where page turning is needed.



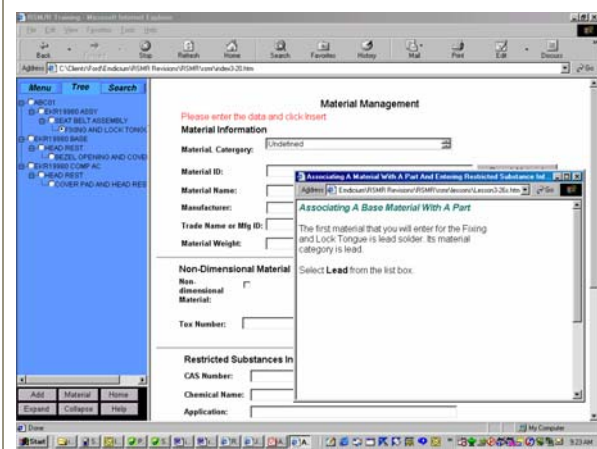
This illustration shows the beginning of the **Component Tree** in the left frame.



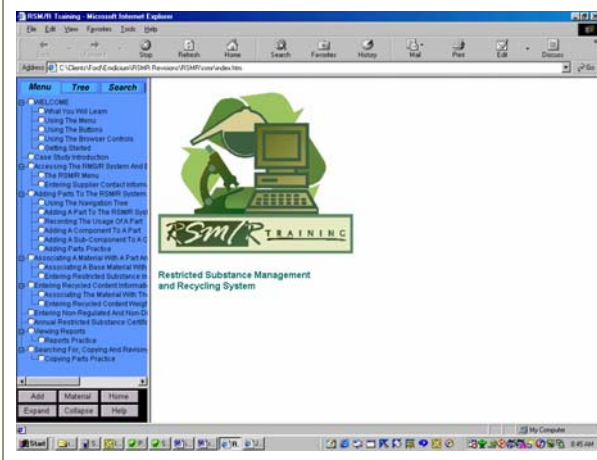
The **Component Tree** builds as the learner completes the steps in the process. The learner can expand and collapse the Component Tree using the + and – signs or the **Expand and Collapse buttons**, just as they can in the RSM/R system.



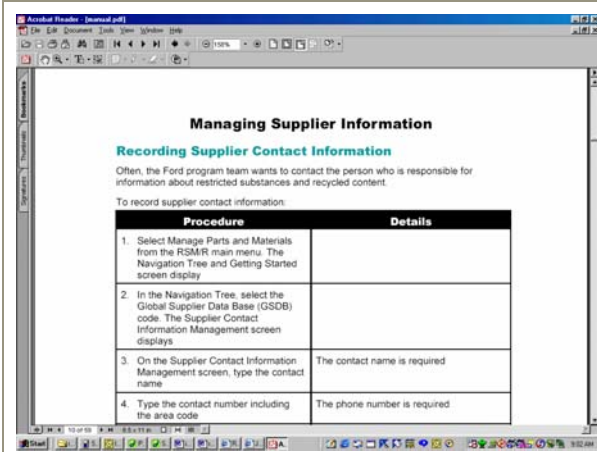
Training feedback helps guide the learner through the process.



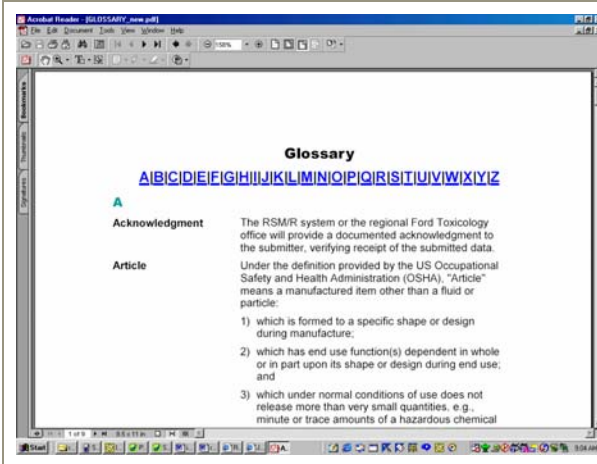
RSM/R system instructions and feedback, shown in red, are also included in the simulation.



The course is comprehensive. This Course Menu shows all of the topics covered in the e-learning.



Clicking the **Help** button in the lower left frame displays an online, printer-friendly **Reference Manual** that provides clear, step-by-step instructions.



There is also an online, printer-friendly **Glossary** that defines all of the terms used in the training. The Glossary is accessed from the navigation bar.